



POTTORFF'S PRODUCT DEVELOPMENT LABORATORY IS NOW AMCA ACCREDITED

Pottorff's Product Development Laboratory has received AMCA accreditation for Damper Air Performance (Pressure Drop) testing per AMCA 500-D. This accreditation lets you know you can rely on Pottorff for accurate, repeatable testing and performance for our products

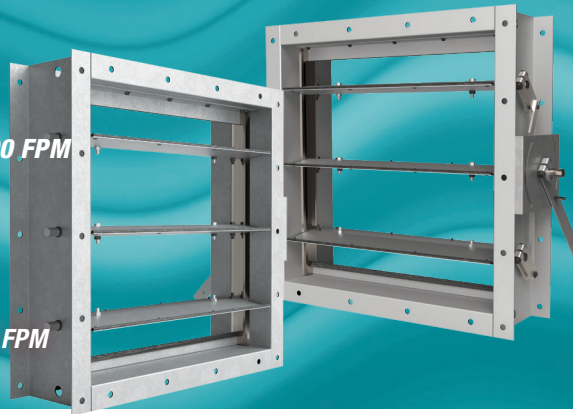
NEW INDUSTRIAL CONTROL DAMPERS

CD-95 / CD-96

HIGH-PERFORMANCE
AIRFOIL BLADE
SYSTEM VELOCITIES UP TO 5000 FPM
3/4" PLATED STEEL AXEL

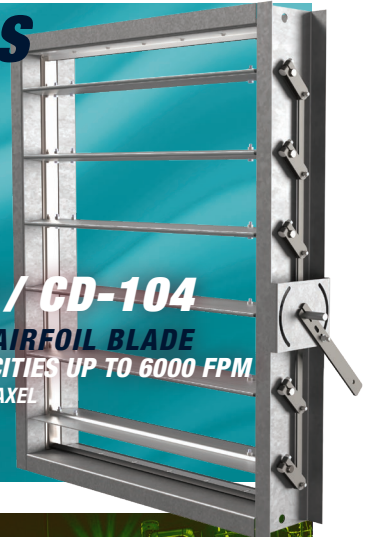
CD-97 / CD-98

HIGH-PERFORMANCE
AIRFOIL BLADE
SYSTEM VELOCITIES UP TO 6000 FPM
1" PLATED STEEL AXEL



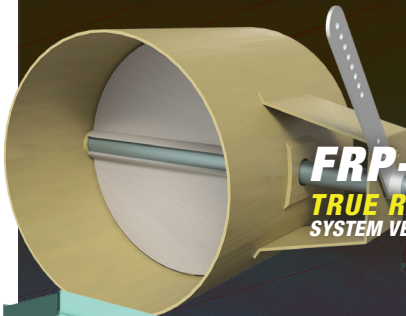
CD-103 / CD-104

ALUMINUM AIRFOIL BLADE
SYSTEM VELOCITIES UP TO 6000 FPM
3/4" PLATED STEEL AXEL



FIBERGLASS LOUVERS AND DAMPERS

Pottorff fiberglass products are designed for applications such as waste-water treatment plants, micro-electronics manufacturing facilities, or applications with chlorine gas in the airstream.



FRP-81R
TRUE ROUND DAMPER
SYSTEM VELOCITIES UP TO 2000 FPM

FRP-81/82
TRIPLE-V BLADE DAMPERS
SYSTEM VELOCITIES UP TO 2000 FPM

FFJ-445
4" STATIONARY BLADE LOUVER

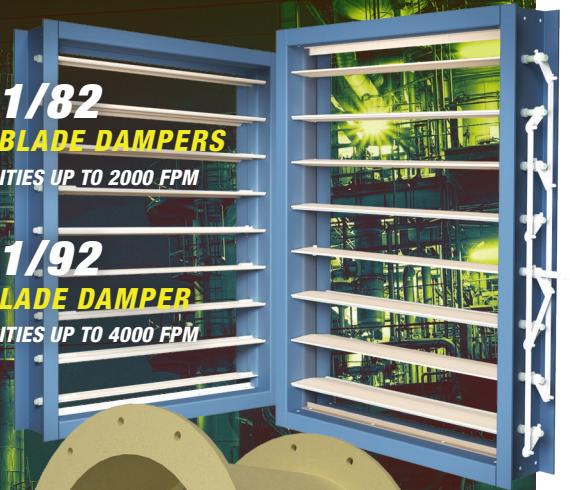
- AMCA Certified – Water Penetration, Air Performance

FRP-91/92
AIRFOIL BLADE DAMPER
SYSTEM VELOCITIES UP TO 4000 FPM

FOJ-445
4" OPERABLE BLADE LOUVER

- Free Area: 40.2%
- Free Area Velocity: 627 fpm

FRP-BDR
ROUND BACKDRAFT DAMPER
ADJUSTABLE COUNTERBALANCE



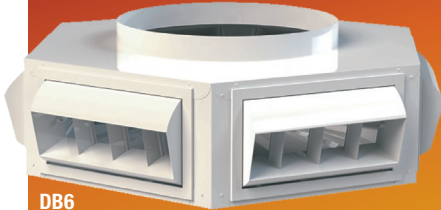
NEW DROPBOX DIFFUSERS



DB4DD
SQUARE NECK

DB4
4 SIDED DIFFUSER

DB4DD
4 SIDED DIFFUSER
DUAL DEFLECTION GRILLE



DB6
ROUND NECK

DB6
6 SIDED DIFFUSER

DB6DD
6 SIDED DIFFUSER
DUAL DEFLECTION GRILLE

Pottorff's concentric dropbox diffusers help customers achieve reliable, efficient air distribution in virtually any type/size of building. Ships fully assembled, and ready to install from the factory with both standard Drum Louvers or optional Double-Deflection Grilles.

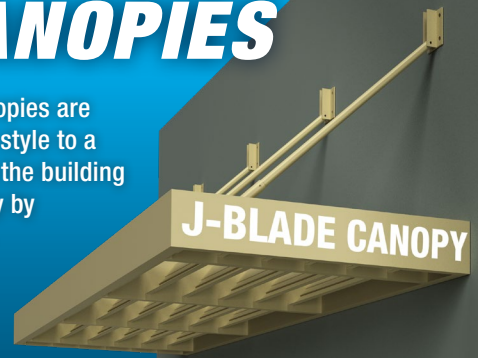
- 20 GAUGE GALVANNEAL STEEL
- ROUND NECK AND SQUARE NECK TRANSITIONS
- INTERIOR OF THE CABINET IS COVERED WITH INSULATING AND ACOUSTIC MATERIAL AND TREATED TO PREVENT CORROSION
- CONE DEFLECTOR DIVERTS THE AIR TOWARDS THE DIFFUSERS FOR GREATER PERFORMANCE

EXTRUDED ALUMINUM CANOPIES



ACA-445 — 4" DEEP CANOPY
ACA-645 — 6" DEEP CANOPY
ACA-845 — 8" DEEP CANOPY

Our new extruded aluminum canopies are designed to provide an aesthetic style to a building's exterior while keeping the building cool. These canopies save energy by reducing glare and thermal load.



ACJ-645 — 6" DEEP CANOPY
ACP-802 — 8" INFILL PANEL

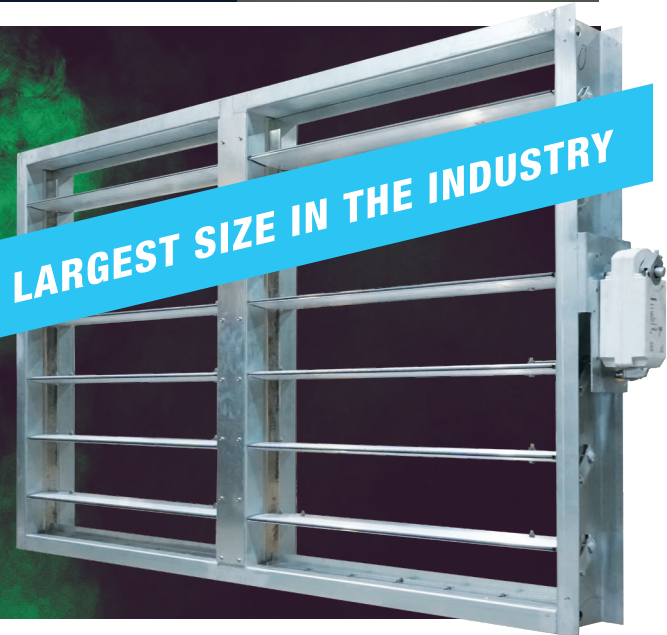
BEST-IN-CLASS SD-93 SMOKE DAMPER

Pottorff is pleased to announce the release of our aluminum blade, SD-93 Industrial Smoke Damper. This damper features Class 1 UL rated leakage at multiple section sizes.

- Largest Size Multiple Section Size in the Industry 72" x 100"
- UL 555S Class 1 Leakage @ 3000 fpm, 4" wg. and 250° F



LARGEST SIZE IN THE INDUSTRY



SAND LOUVERS

EVS-422
4" SAND LOUVER

EVS-745
7" SAND LOUVER

44% FREE AREA

Pressure Loss: 0.20 in. wg.

Pottorff's EVS-422 4" and EVS-745 7" extruded aluminum sand louvers offer superior protection against wind-driven sand. They are ideally suited for high wind areas or applications that are sensitive to wind-driven sand penetration.

BOTH MODELS ARE AMCA CERTIFIED FOR AIR PERFORMANCE AND WIND-DRIVEN SAND

EFD-635-MD

INDUSTRY LEADING FREE AREA: 60.9%

Our EFD-635-MD louver is engineered and tested to withstand the extreme loads, debris impact and cyclic fatigue associated with hurricanes.

- AMCA Rated for Water Penetration
- AMCA Rated for Air Performance
- Miami-Dade County Approved
- Florida Building Code Approved

**AMCA 540 LISTED (IMPACT RESISTANT) BASIC PROTECTION
LEVEL D – ENHANCED PROTECTION – LEVEL E**

ECD-545-BL 5" BLAST LOUVER

The ECD-545-BL has been independently 3rd-party tested for blast resistance, meeting the requirements of GSA Condition 2 (Very Safe) when exposed to peak blast pressures of 16.7 psi and impulses of 85.6 psi-ms..

EBE-445 4" COMBINATION LOUVER/BACKDRAFT DAMPER

**INDUSTRY LEADING
50% FREE AREA**

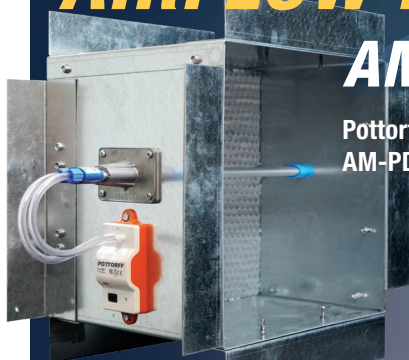
This combination louver features stationary louver blades combined with an integral gravity operated backdraft damper to protect exhaust air openings in exterior walls.

AIRFLOW MEASURING STATIONS

AM-PD STAND-ALONE AIRFLOW MEASURING STATION

Pottorff is pleased to announce the new AMCA Certified AM-PD pressure differential system.

- AMCA Certified Airflow Measuring Station
- Bluetooth Transducer for cell phone monitoring
- Basic Transducer offers a cost effective option with standard 0-10 VDC analog outputs



POTTORFF'S AIRFLOW MEASURING STATIONS

precisely monitor intake airflow and adjust the amount of intake air delivered to meet a determined IAQ (Indoor Air Quality) level based on real-time measurements.

PRESSURE DIFFERENTIAL SYSTEMS

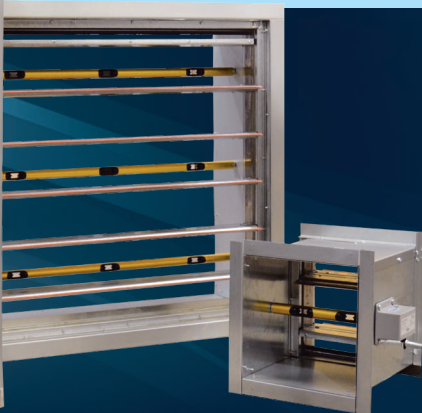
combine multi-point, self-averaging pressure sensing probes with a highly accurate VELTRON 2500-plus transmitter for reliable and consistent air measuring.

THERMAL DISPERSION SYSTEMS

utilize fully encapsulated thermistors paired with heating circuits and ELECTRA-flo G5 transmitters for state-of-the-art airflow measuring.



STAINLESS COMPONENTS AVAILABLE FOR CORROSIVE ENVIRONMENTS



XAV-545 NEWLY REDESIGNED

ICC 500 FEMA GRILLES



- Certified ICC 500 – 2020
- FEMA P-361 Compliant
- FEMA P-320 Compliant
- UL Windstorm Rated Assembly
- AMCA Certified



XCD-545 NEW FLANGE OPTIONS CLASS A WIND-DRIVEN RAIN PROTECTION

THE SINGLE PRODUCT THAT OFFERS THE BEST PROTECTION AGAINST STORM CONDITIONS.

**BEST-IN-CLASS: FREE AREA – 51.2%
WATER PENETRATION RESISTANCE – 680 FPM**

FD-125R 6" DIAMETER NOW AVAILABLE

You can now specify our FD-125R Fire Damper at a 6" diameter. This allows our true-round fire damper to be connected to a small 6" diameter duct, allowing a round duct connection without the need for a square to round transition.

