

# POTTORFF'S EXTENSIVE LINE OF INDUSTRIAL CONTROL DAMPERS FOR ANY INDUSTRIAL-GRADE APPLICATION

## AIR CONTROL

- AIRFOIL BLADE
- ALUMINUM AIRFOIL BLADE
- FIBERGLASS
- TRIPLE-V BLADE
- TRUE ROUND

## BACKDRAFT

- FIBERGLASS
- TRIPLE-V BLADE
- TRUE ROUND

## BLAST SUPPRESSION

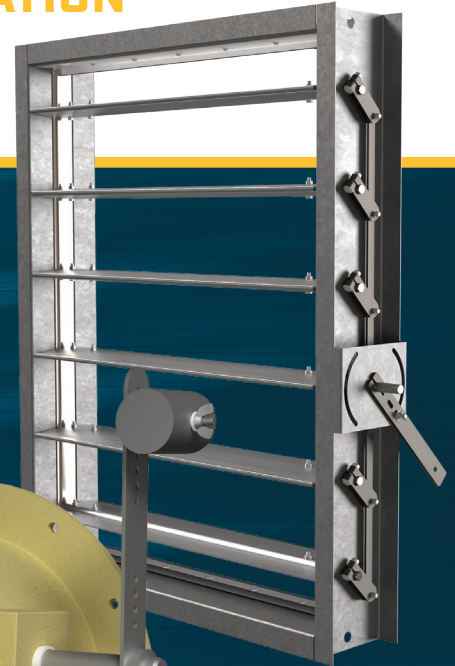
## BUBBLE-TIGHT

## TORNADO

## TUNNEL VENTILATION

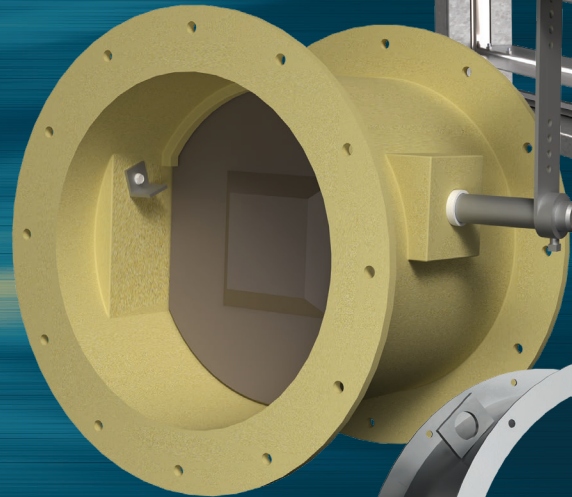
### CD-103 / CD-104

High-Performing  
Aluminum Airfoil  
Blade Damper



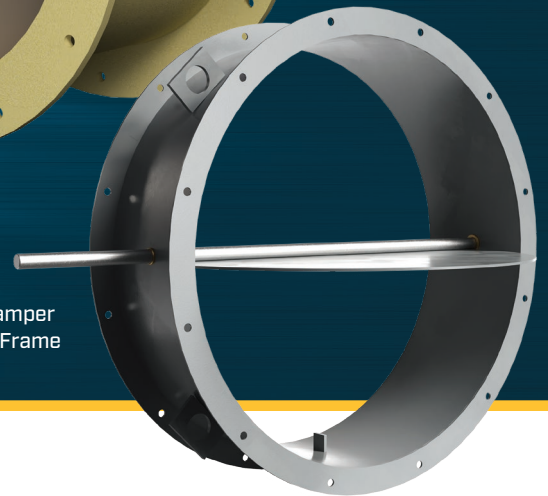
### FRP-BDR

Fiberglass Backdraft  
Damper for  
Corrosive Environments



### CD-81R

Round Control Damper  
Rugged Channel Frame



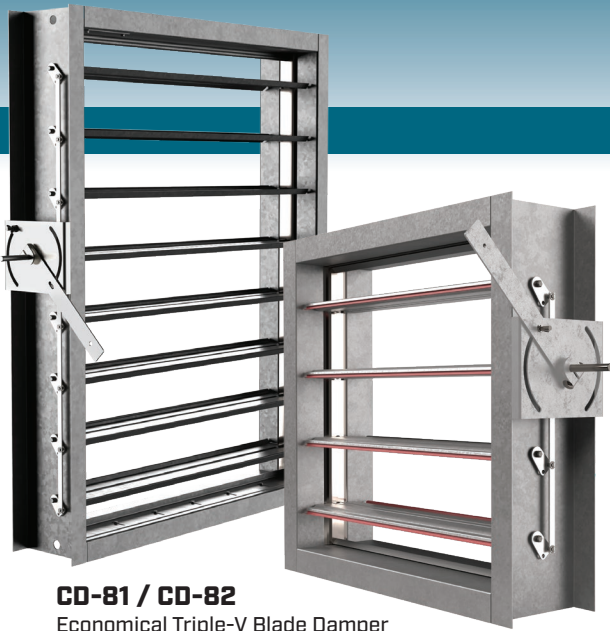
# POTTORFF

[www.pottorff.com](http://www.pottorff.com)

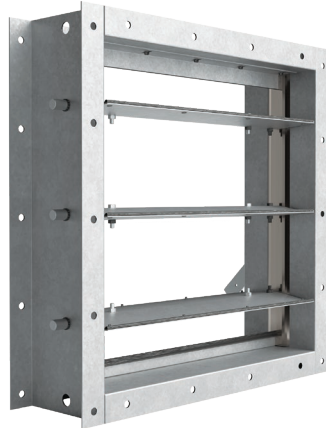
# INDUSTRIAL CONTROL DAMPER COMPARISON GUIDE

POTTORFF MODEL					RUSKIN	GREENHECK
<b>TRIPLE-V BLADE</b>	<b>PRESSURE</b> (in.wg.)	<b>VELOCITY</b> (fpm)	<b>TEMPERATURE</b> (F)	<b>AXLE</b>		
CD-81 / CD-82	10	3000	250	1/2" PLATED STEEL	CD80VG1	HCD-120
CD-83 / CD-84	15	5000	250	3/4" PLATED STEEL	CD80VG2	HCD-220
FRP-81 / FRP-82 FIBERGLASS	20	2000	200	3/4" FIBERGLASS	1108	—
<b>AIRFOIL BLADE</b>						
CD-91 / CD-92	9	4000	450	1/2" PLATED STEEL	CD80AF1	HCD-130
CD-93 / CD-94	32	5000	450	3/4" PLATED STEEL	CD80AF2	HCD-230
CD-95 / CD-96	25	5000	450	3/4" PLATED STEEL	CD80AF3	HCD-330
CD-97 / CD-98	45	6000	450	1" PLATED STEEL	CD80AF4	HCD-530
FRP-91 / FRP-92 FIBERGLASS	28	4000	200	3/4" FIBERGLASS	1108AF	—
<b>ALUMINUM AIRFOIL BLADE</b>						
CD-103 / CD-104	15	5000	450	3/4" PLATED STEEL	CD102	HCD-240
<b>TUNNEL DAMPER</b>						
TD-93 / TD-94	32	4000	482	3/4" STAINLESS	TD102	HTD-640
<b>TRUE ROUND</b>						
CD-81R	10	6000	250	PLATED STEEL	CDR82	HCDR-150
CD-83R	13.5	5150	600	—	—	HCDR-250
CD-85R	20	6400	1000	—	CDR92	HCDR-350
CD-87R	30	7000	400	—	CDR93	HCDR-450
FRP-81R FIBERGLASS	5	2000	200	FIBERGLASS	911	—
FRP-83R FIBERGLASS	10	6000	200	FIBERGLASS	912	—
FRP-85R FIBERGLASS	30	6000	200	FIBERGLASS	914	—
<b>BACKDRAFT</b>						
BD-84	10	3500	250	1/2" PLATED STEEL	CBS7	HPR-120
FRP-BDR TRUE ROUND	10	6000	200	STAINLESS	CBDR912	—
FRP-BD-84 3-V	10	2000	200	—	426	—
FRP-BD-94 AF	16	4000	200	—	426AF	—
<b>BUBBLE TIGHT</b>						
CD-91R	10	3900	250	—	BTR82	HBTR-151
CD-95R	30	6500	250	SOLID PLATED STEEL	BTR92	HBTR-451
CD-99R	40	6500	250	—	—	HBTR-551
<b>BLAST DAMPERS</b>						
BC-550	15	4000	250	3/4" SOLID STEEL	CBS8BL	HBS-431
<b>TORNADO DAMPER</b>						
TOR-550	83	6400	250	—	—	HTOD-330 HTOD-331

We offer factory-installed electric or pneumatic actuators, various blade seal options, customizable bearings, and mounting bolt hole configurations.

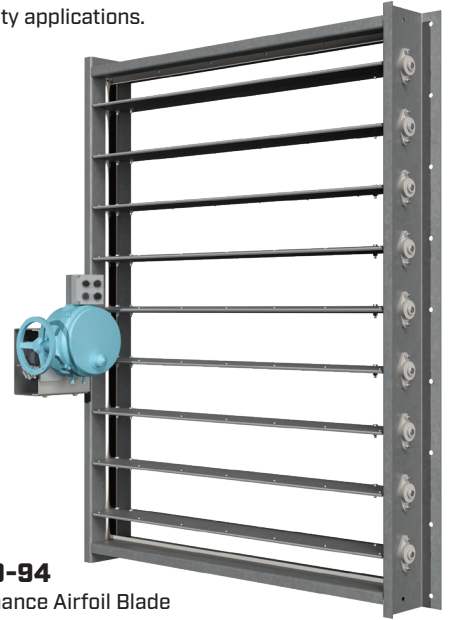


**CD-81 / CD-82**  
Economical Triple-V Blade Damper

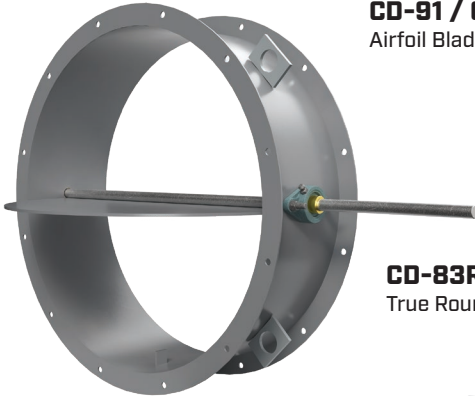


**CD-91 / CD-92**  
Airfoil Blade Damper

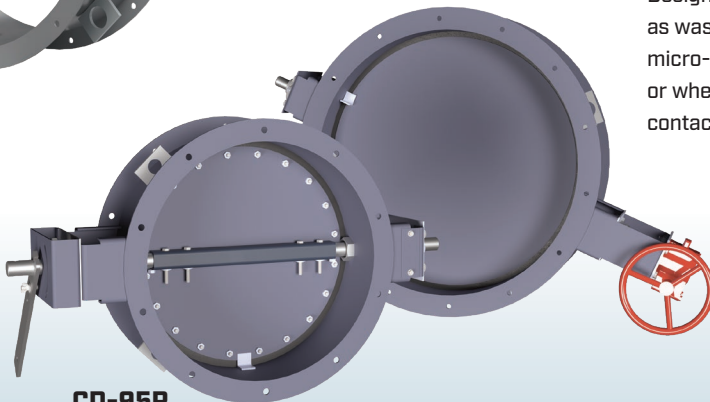
**CD-93 / CD-94**  
High-Performance  
Airfoil Blade



**TD-93 / TD-94**  
High-Performance Airfoil Blade  
Tunnel Ventilaton Damper



**CD-83R**  
True Round Damper



**CD-95R**  
Bubble-Tight Damper

**FIBERGLASS PRODUCTS**

Designed for applications such as wastewater treatment plants, micro-electronics manufacturing or wherever they would come in contact with corrosive gases.

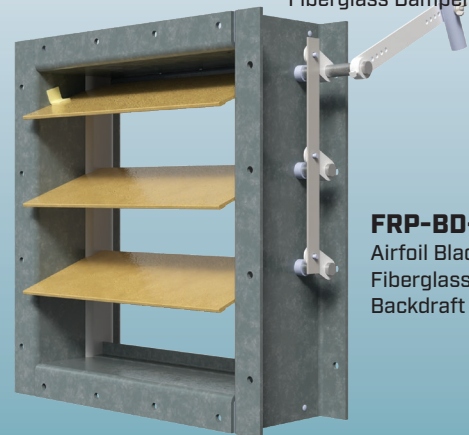


**FRP-85R**  
True Round  
Fiberglass Damper

**FRP-91 / FRP-92**  
Airfoil Blade  
Fiberglass Damper



**BC-550**  
Blast Suppression Damper  
Able to handle peak reflective pressures ranging up to 15 psi, this damper mitigates the propagation of heightened pressures that can infiltrate a building's duct system following an explosion.



**FRP-80-94**  
Airfoil Blade  
Fiberglass  
Backdraft Damper

Industrial control dampers employ rugged construction for automatic air control and balancing in high pressure and velocity applications.

Pottorff's industrial control dampers have been integral to numerous high-profile projects, including models tailored to meet the exacting standards of the One World Trade Center. Additionally, our dampers are selected for their ability to fulfill the robust criteria for strength, minimal leakage, and operational efficacy in tunnel transit systems.



**Left:** One World Trade Center – Manhattan, NY **Top Center:** Busch Stadium – St Louis, MO  
**Top Right:** Alaskan Way Viaduct – Seattle WA **Bottom Right:** Angrignon Metro Subway Station – Montreal, QC

PBL 9/24