

### Application

Pottorff dampers may be supplied with a factory hemmed 20 gauge (1) sleeve for use with standard drive slip and S-slip connections. Sleeves and duct may be field hemmed by folding back the vertical sides a maximum of 1/2" (13) to accommodate a 1" (25) wide drive slip (as shown in Figure 1). Standard drive slips are UL tested breakaway connections on dampers 20" (508) high and less.

### General Installation

Join damper sleeve to duct at top and bottom sides using any plain S, hemmed S, double S, inside slip, standing S, or reinforced standing S slip. See Figure 2.

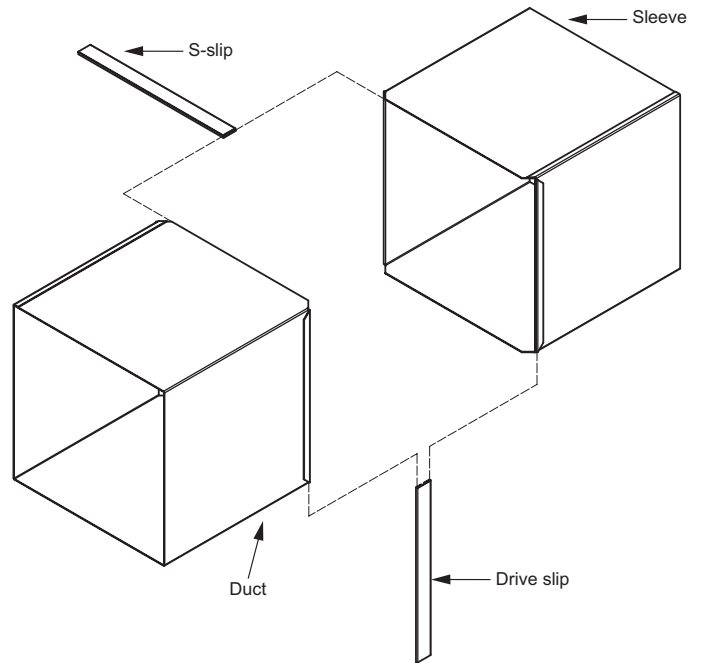
The drive slip connection is then used to join the vertical sides of the damper sleeve to the duct. Cut a length of drive slip connection a maximum of 4" (102) longer than the vertical duct dimension. Guide the drive slip connection onto the side members securing it over the hemmed edges until the connection extends beyond the top and bottom sides of the damper sleeve/duct. The extra length should be hammered flat overlapping all four corners.

#### NOTES

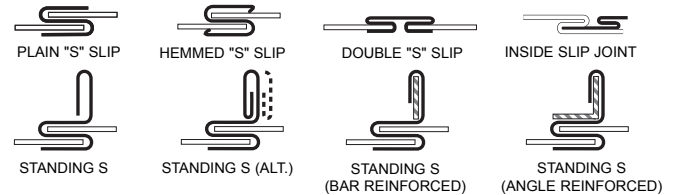
1. Refer to appropriate damper installation sheet for installation information not covered on this sheet.
2. When optional duct sealing is required, the following sealants may be applied in accordance with the instructions supplied by the sealant manufacturer.

Design Polymeric - DP 1010

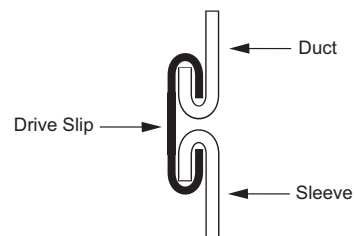
Precision - PA2084T



**Figure 1**



**Figure 2 - S-slip Connections (side view)**



**Figure 3 - Drive slip Connections (top view)**

Fire and Fire Smoke Dampers **IS&Drive** April 2008

