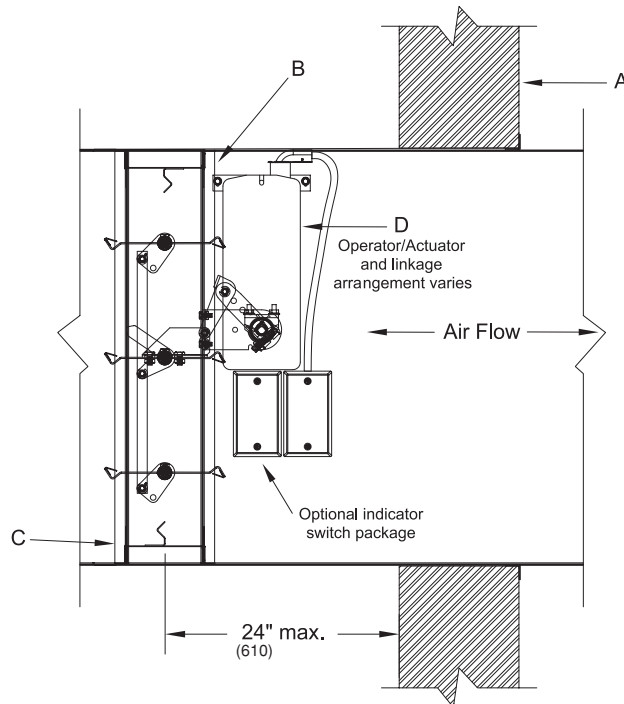


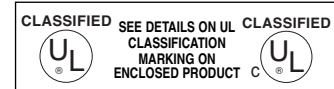
The following installation details apply to models **SD-141, SD-142, SD-143, SD-151, SD-152, SD-151V and SD-152V**



**Damper Installed at Smoke Partition
Vertical Mount Shown (Horizontal Mount Similar)**

Illustrations show triple-V bladed (140 type), steel airfoil blade (150 type) similar.

- A. Leakage rated dampers can be installed vertically or horizontally, in accordance with NFPA-90A. Except as restricted by local building codes, the damper shall be installed no more than 24" (610) from the smoke partition. Install damper squarely and free from racking. Do not compress or stretch the damper frame.
- B. When joining multiple sections or fastening the damper to the duct, the damper shall be fastened with $\frac{3}{16}$ " (4.8) diameter steel rivets, Quick-Lock Joints, welds, No. 10 (M5) bolts or sheet metal screws at 8" (203) o.c. maximum. A minimum of two connections per side, top and bottom. For installations more than one damper high and 1 damper wide, a minimum 14 gauge x 5" (1.9 x 127) supplemental steel mullion is required. There are two options for the mullion. If the mullion is to be perpendicular to the blades, then the mullion should be the same length as the opening/duct height and must be installed between the damper frames running parallel to the opening/duct height. If the mullion is to be parallel to the blades, then the mullion should be the same length as the opening/duct width and must be installed between the damper frames running parallel to the opening/duct width.
- C. A continuous bead of Dow-Corning 999A, Dow-Corning 700 or 732, Fiberfax, or GE RTV 108 OR SCS 1201 RTV silicone rubber sealant shall be applied between the damper and the sleeve. Sealant is only required on one side of the damper.
- D. Leakage rated dampers and qualified operators are tested together by Underwriters Laboratories and are factory installed to qualify for standard damper/operator warranties. Damper operator / actuator must be tested prior to system start-up to ensure proper operation. Prior to applying power to the operator / actuator the power must be verified.



Underwriters Laboratories file #R11767
City of New York listing # MEA 295-98-E
The product is also listed by CSFM file # 3230-0368:111 and conforms to NFPA 90A and NFPA 92A.